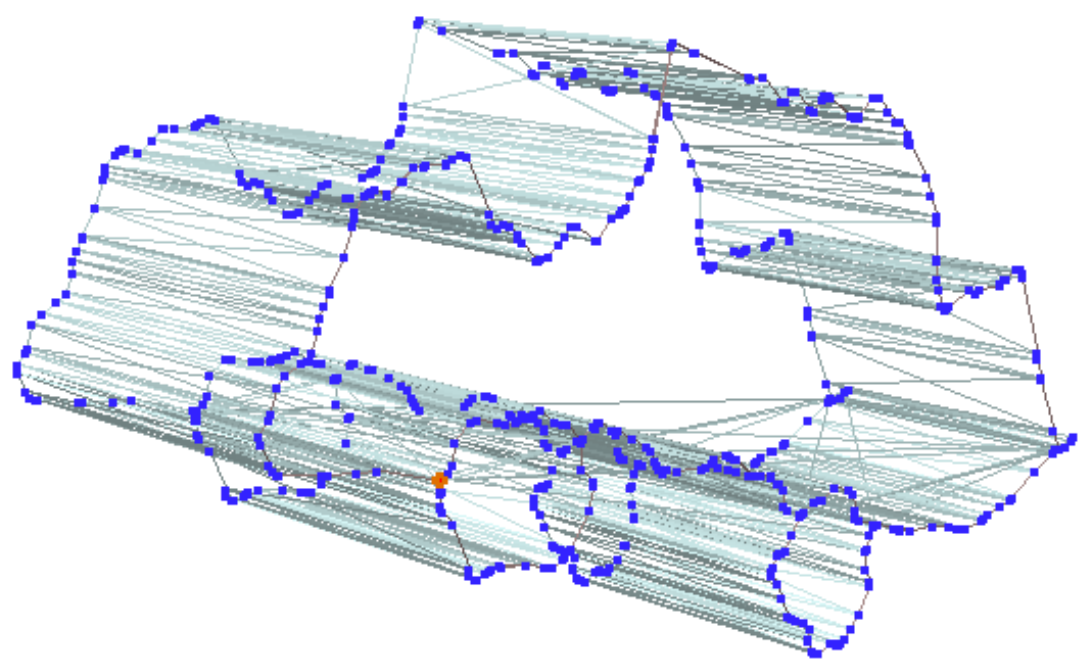


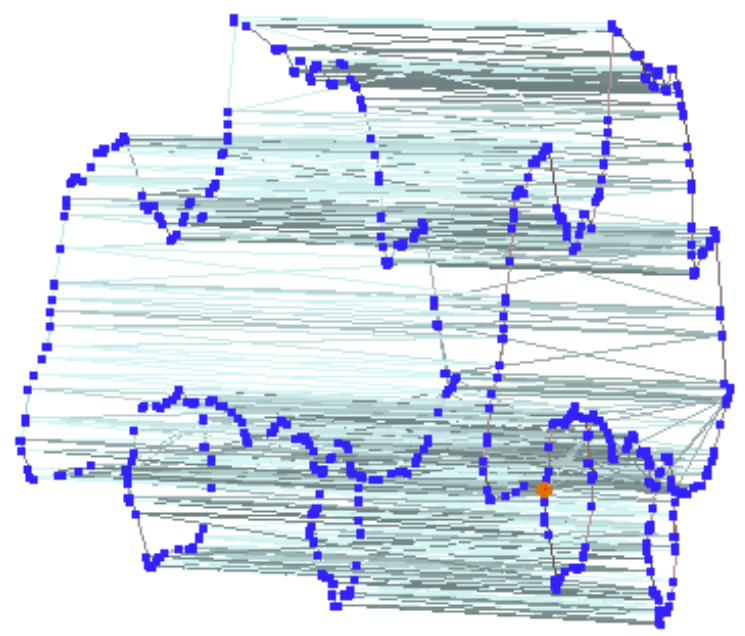
3D View



Select vertices & triangles: make a selection Ctrl+: add to selection select from current selection A: select all items O: clear selection

Vertices:	4,544 (0 selected)	Triangles:	6,816 (0 selected)	FPS:	65.43 (15.28ms)
-----------	--------------------	------------	--------------------	------	-----------------

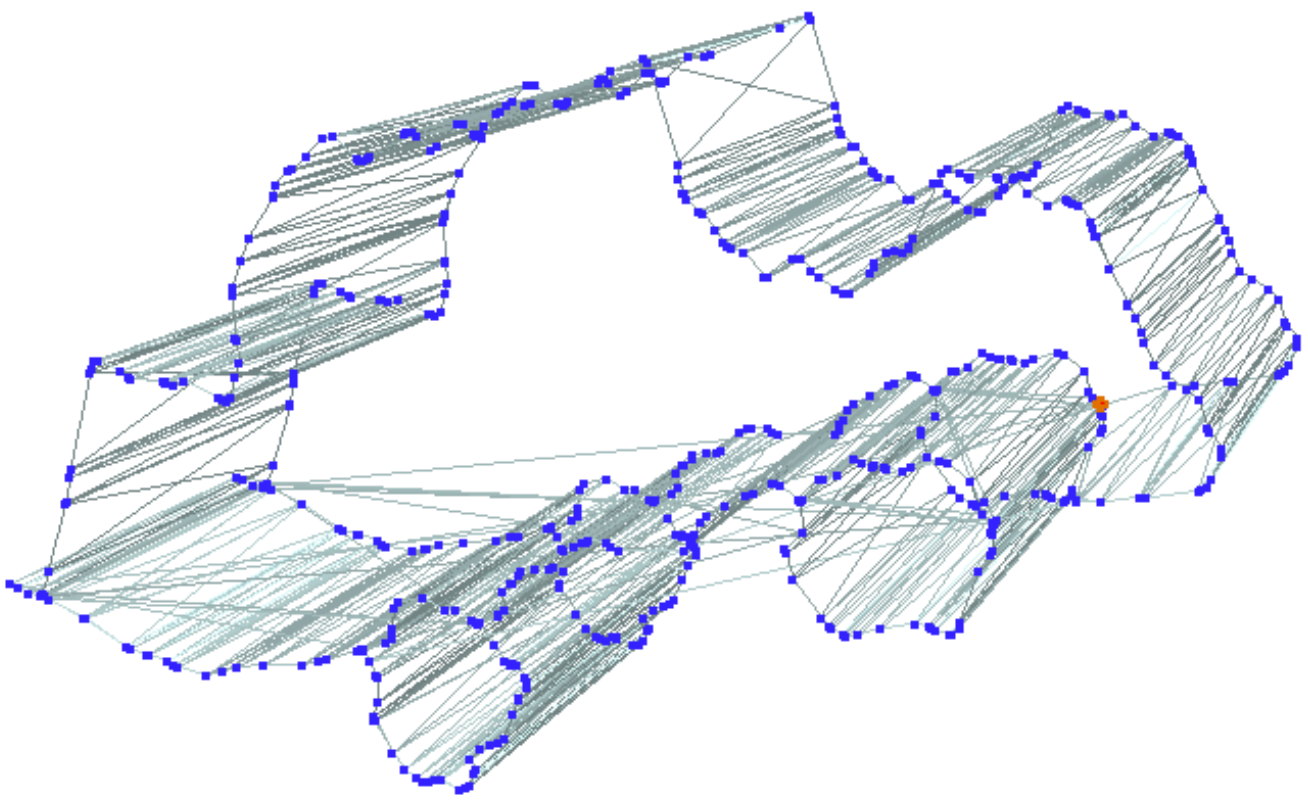
3D View



Create, Open, Save, or Quit Draw3D

Vertices:	4,544 (0 selected)	Triangles:	6,816 (0 selected)	FPS:	65.34 (15.3ms)
-----------	--------------------	------------	--------------------	------	----------------

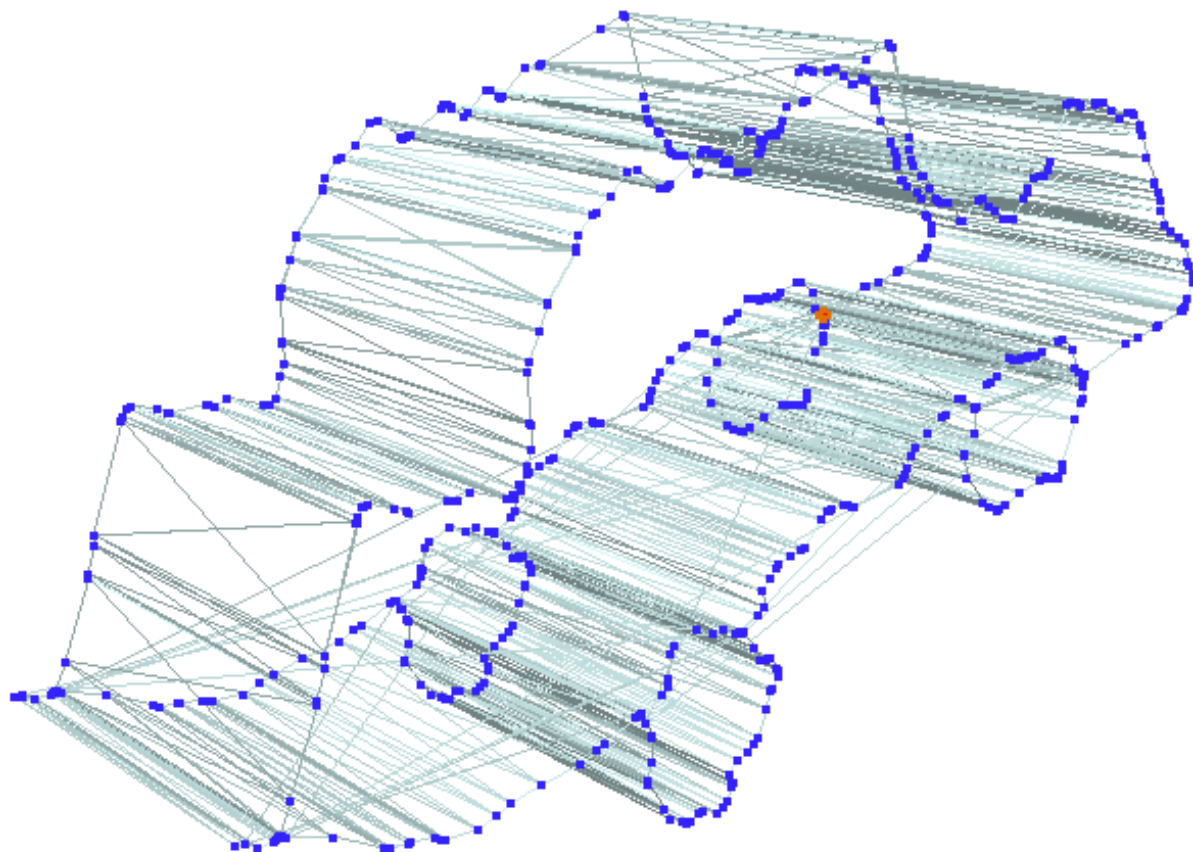
3D View



Select vertices & triangles:  make a selection     Ctrl+: add to selection     select from current selection    A: select all items    O: clear selection

Vertices:	4,544 (0 selected)	Triangles:	6,816 (0 selected)	FPS:	42.67 (23.43ms)
-----------	--------------------	------------	--------------------	------	-----------------

3D View



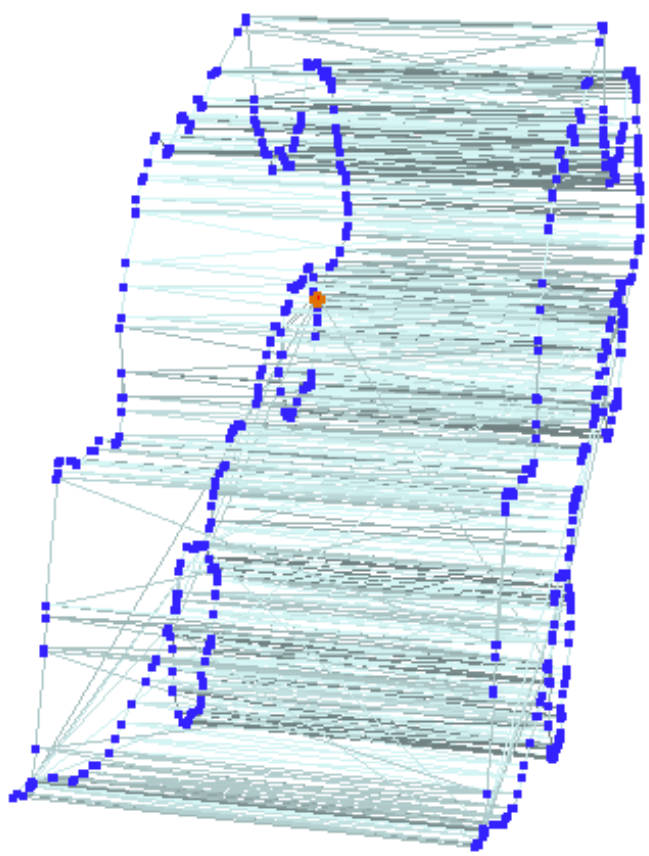
Select vertices & triangles: make a selection Ctrl+: add to selection select from current selection A: select all items O: clear selection

Vertices: 4,544 (0 selected)

Triangles: 6,816 (0 selected)

FPS: 46.88 (21.33ms)

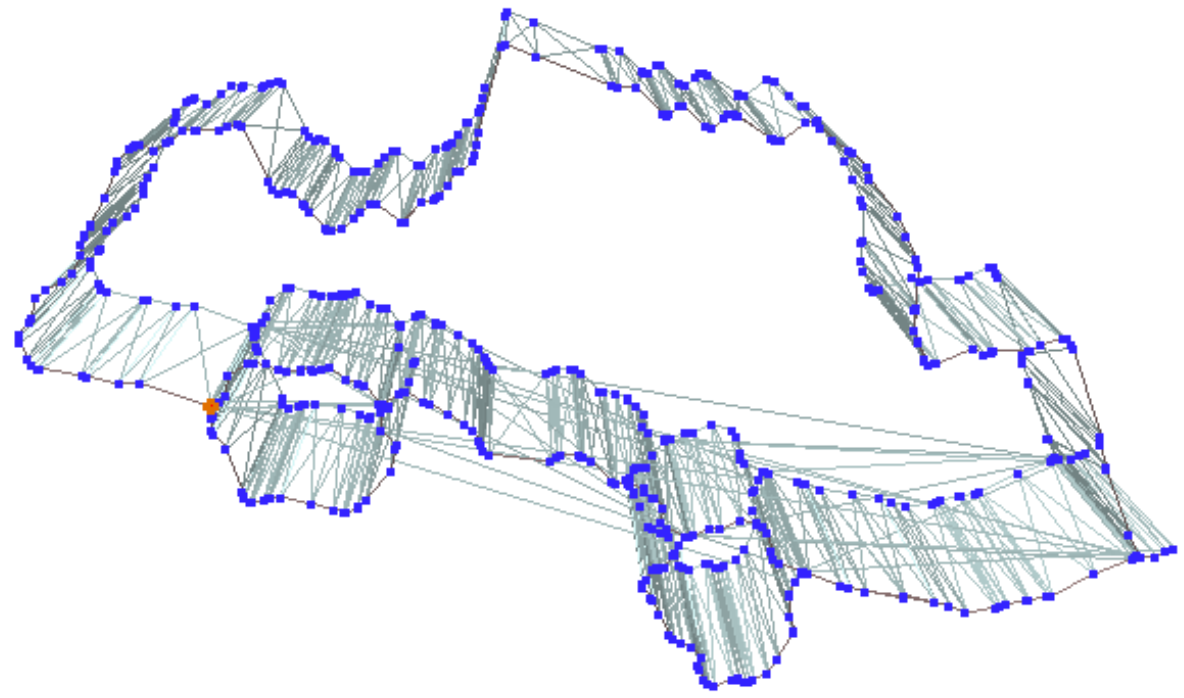
3D View



Select vertices & triangles: make a selection Ctrl+: add to selection select from current selection A: select all items O: clear selection

Vertices:	4,544 (0 selected)	Triangles:	6,816 (0 selected)	FPS:	63.92 (15.64ms)
-----------	--------------------	------------	--------------------	------	-----------------

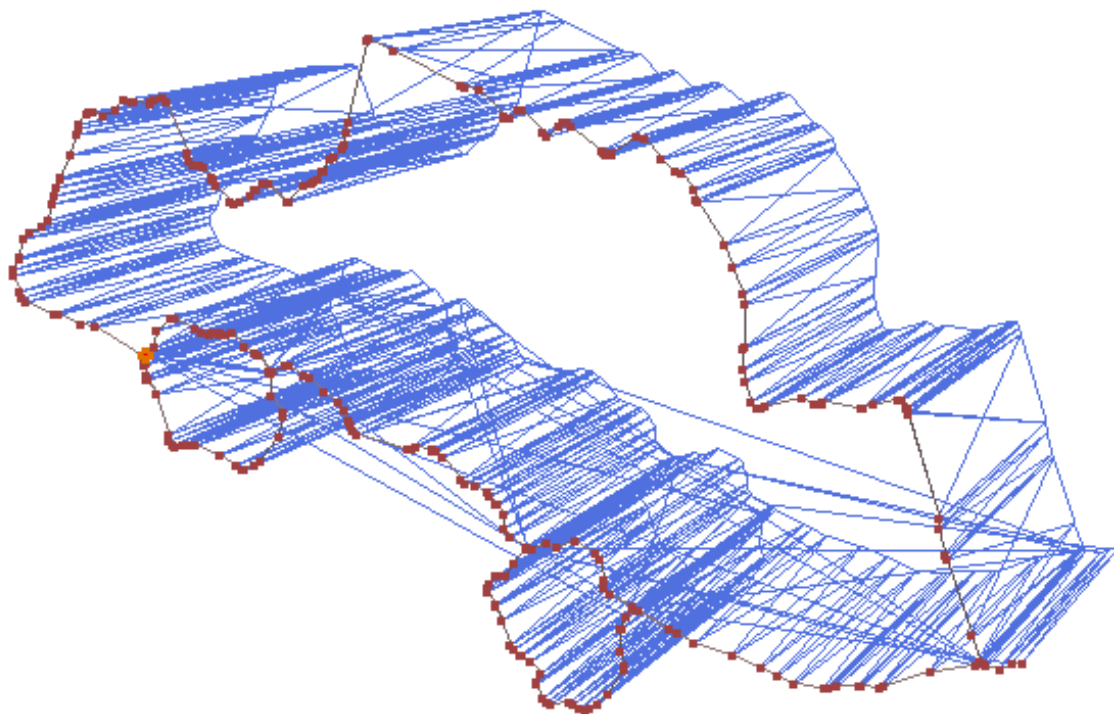
### 3D View



Select vertices & triangles:  make a selection  Ctrl+: add to selection  select from current selection A: select all items O: clear selection

Vertices:	4,544 (0 selected)	Triangles:	6,816 (0 selected)	FPS:	39.83 (25.11ms)
-----------	--------------------	------------	--------------------	------	-----------------

3D View



Change 3D View's Settings

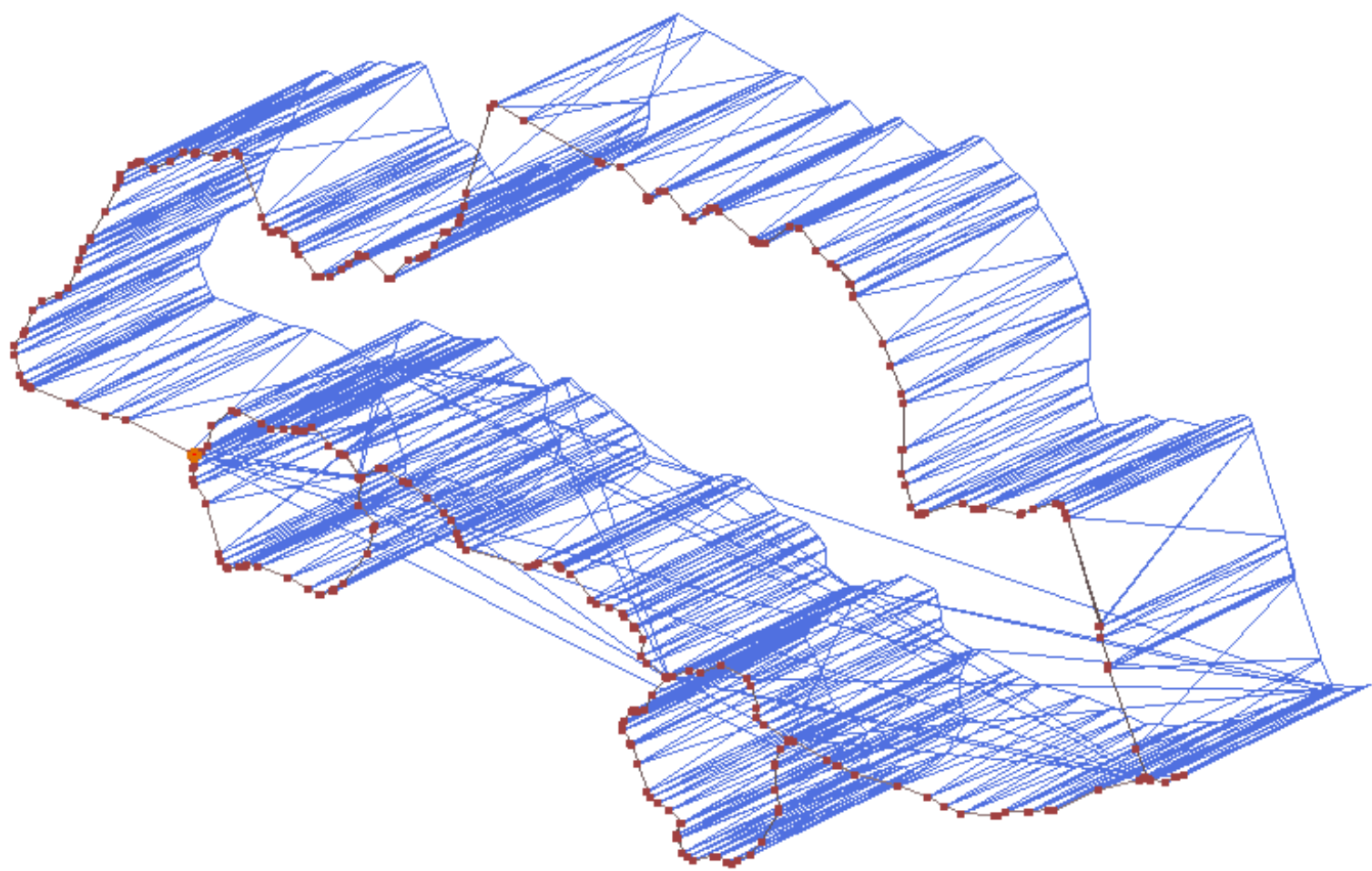
Vertices: 4,544 (2,272 selected)

Triangles: 6,816 (1,136 selected)

FPS: 2.328 (429.5ms)



3D View



Select vertices & triangles:  make a selection  Ctrl+: add to selection  select from current selection A: select all items O: clear selection

Vertices:	4,544 (2,272 selected)	Triangles:	6,816 (1,136 selected)	FPS:	1.67 (598.7ms)
-----------	------------------------	------------	------------------------	------	----------------